



Bedrooms: 3

Bathrooms: 3

Build: 212m²

Plot: m²

Price: 180,000 €



Townhouse, Parcent

Ref: AX10343

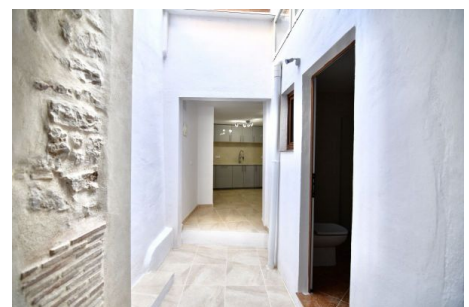
- ✓ Close to amenities
- ✓ Fitted wardrobes
- ✓ Mains Water
- ✓ Storage room
- ✓ Wood burner

- ✓ En-suite bathroom
- ✓ Mains Drainage
- ✓ Mountain view
- ✓ Street parking

- ✓ Fireplace
- ✓ Mains Electric
- ✓ Roof terrace
- ✓ Terrace



A beautifully reformed traditional townhouse located in the heart of the quintessential Spanish village of Parcent in the stunning Jalon Valley. This property has been modernised to a high standard keeping both traditional and modern features throughout and has been designed over three levels. Entrance to the lower level is through a set of beautiful, classical Spanish doors that lead to an expansive ground floor space that consists of a living and dining area with a log burner, internal glass-covered courtyard, cloakroom with shower, fully fitted modern kitchen and large storage room. The first level has a master bedroom with (See Website for more Information)



Tel: +34 696 688 575

Email: lisa@aplaceinthevalley.com

Web: www.aplaceinthevalley.com