



Bedrooms: 3

Bathrooms: 2

Build: 168m²

Plot: 536m²

Price: 285,000 €



Villa, Parcent

Ref: AX10290

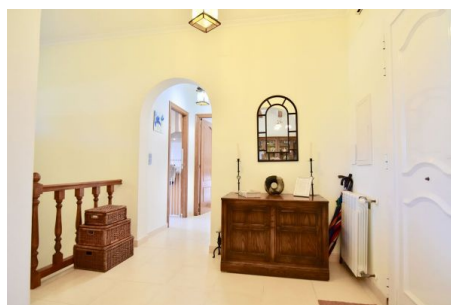
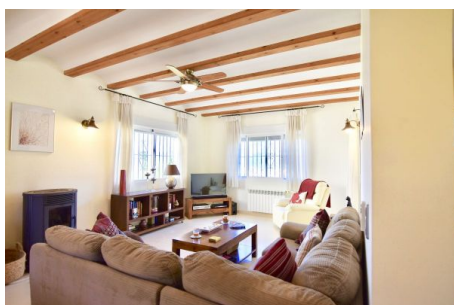
- ✓ Air-conditioning
- ✓ Countryside view
- ✓ Mains Drainage
- ✓ Off-road parking
- ✓ Swimming Pool

- ✓ Balcony
- ✓ Covered terrace
- ✓ Mountain view
- ✓ Pellet Burner
- ✓ Terrace

- ✓ Central heating
- ✓ Double glazing
- ✓ Naya
- ✓ South orientation
- ✓ Underbuild



A beautiful well presented south facing three bedroom detached villa situated in a commanding position on the outskirts of Parcent in the Jalon valley. The accommodation on the first floor includes a lovely entrance hall, large lounge/dining area and a feature pellet burning stove, from here you can access the south facing covered terrace with stunning countryside and mountains views. Also, on this level, there is a fully fitted kitchen, a double bedroom and a separate family bathroom. Internal stairs lead down to the pool level which features accommodation to include a family shower room, double bedroom, a large room (See Website for more Information)



Tel: +34 696 688 575

Email: lisa@aplaceinthevalley.com

Web: www.aplaceinthevalley.com